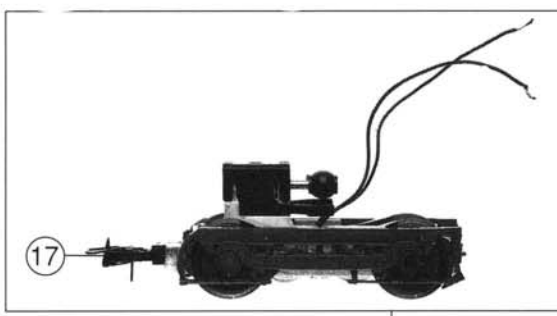
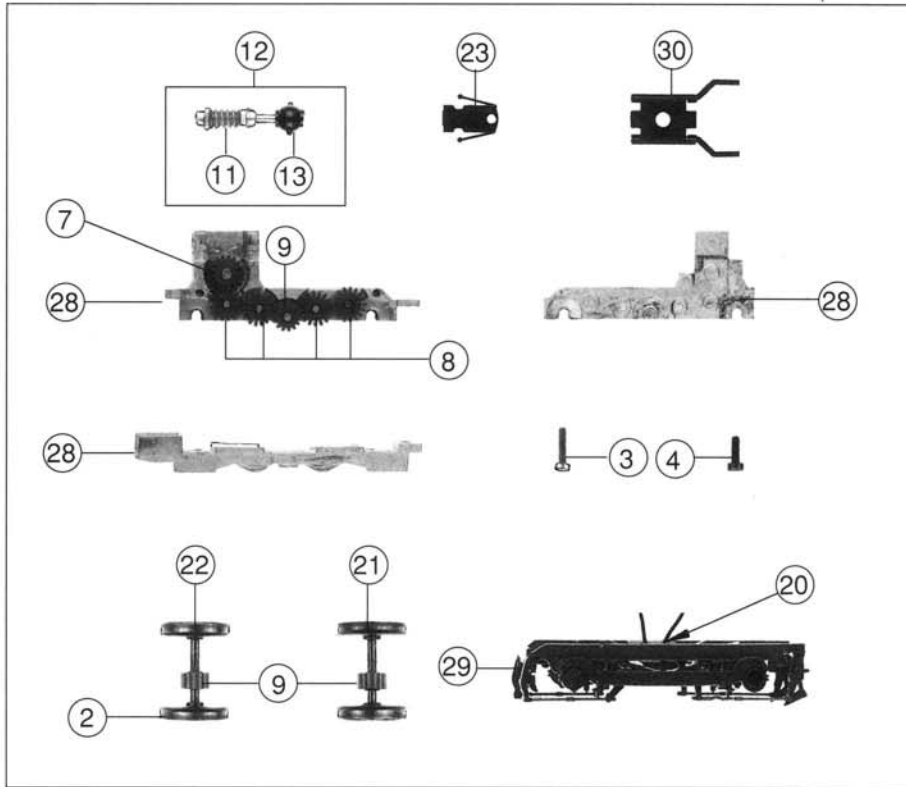
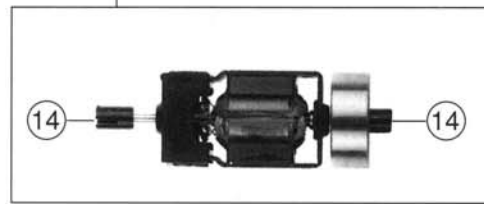
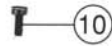
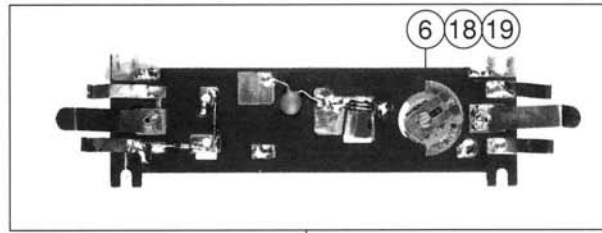


Pos.-Nr.	Text	Art.-Nr.	Preis-gruppe
1	Motor komplett <i>Motor assembly</i>	85068	57
2	Hafttring <i>Traction tyre</i>	85612	17
3	Schraube M 2x8 <i>Screw M 2x8</i>	85674	2
4	Schraube M 2x5 <i>Screw M 2x5</i>	85693	2
5	Schraube 2,2x6,5 <i>Screw 2,2x6,5</i>	85800	2
6	Feder <i>Spring</i>	86205	2
7	Zahnrad z=19/14; m 0,4 <i>Gear T=19/14; m 0,4</i>	86416	2
8	Zahnrad z=17; m 0,4 <i>Gear T=17; m 0,4</i>	86418	2
9	Zahnrad z=14 <i>Gear T= 14</i>	86480	2
10	Schraube M 2x4 <i>Screw M 2x4</i>	85670	2
11	Schnecke Z 1; m 0,4 <i>Worm Z 1; m 0,4</i>	86703	4
12	Schneckensatz <i>Wormset</i>	86861	24
13	Kardanlager <i>Cardan bearing</i>	87098	3
14	Kardanschale (Motor) <i>Cardan bearing (motor)</i>	87113	3
15	Kardanwelle <i>Cardan shaft</i>	87124	3
16	Platine komplett <i>Printed circuit assembly</i>	87745	40
17	Standard Kupplung <i>Standard coupling</i>	89246	5
18	Umschaltkontakt <i>Switch contact</i>	89711	6
19	Schaltbolzen <i>Switch pin</i>	89714	6
20	Radkontakt <i>Wheel contact</i>	89918	5
21	Radsatz <i>Wheelset</i>	90512	17
22	Radsatz mit 1. Hafttring <i>Wheelset with 1 traction tyre</i>	90513	18
23	Kupplungskammer <i>Coupling chamber</i>	97552	3
24	Drehgestell komplett 1 <i>Bogie assembly 1</i>	97553	55
25	Drehgestell komplett 2 <i>Bogie assembly 2</i>	97554	55
26	Zurüstbeutel 1 <i>Bag with accessories 1</i>	97555	20
27	Zurüstbeutel 2 <i>Bag with accessories 2</i>	97556	20
28	Getriebeteilesatz <i>Gear parts set</i>	97557	35
29	Drehgestellblende <i>Bogie frame</i>	97558	25
30	Schneckendeckel <i>Worm cover</i>	97559	4



26 o. Abb. / no. ill.
Zurüstbeutel 1
Bag with accessories 1

27 o. Abb. / no. ill.
Zurüstbeutel 2 Kupplungen
Bag with accessories 1 coupling

