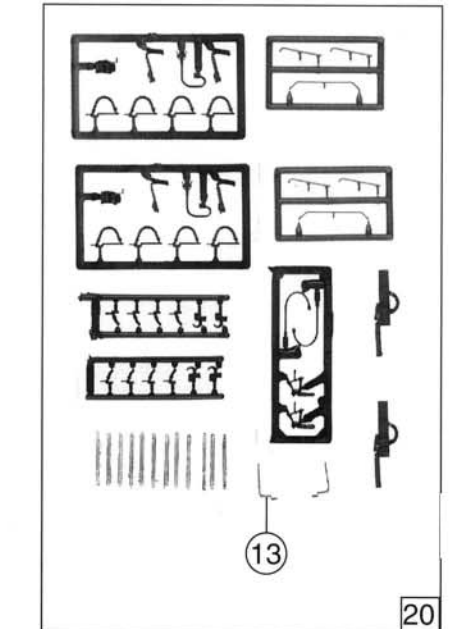
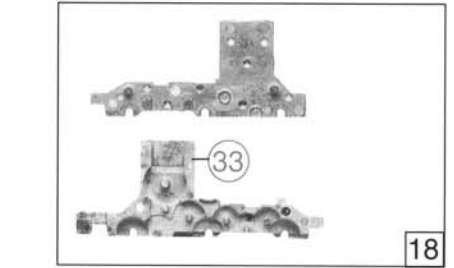
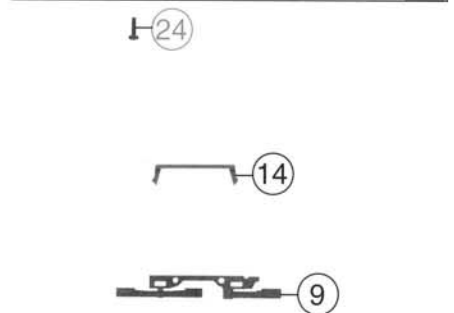
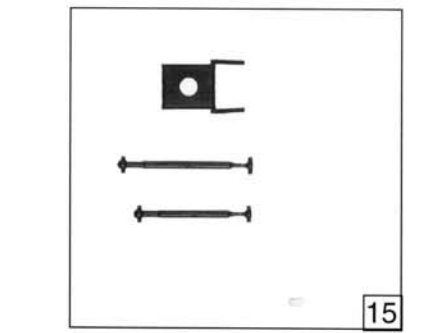
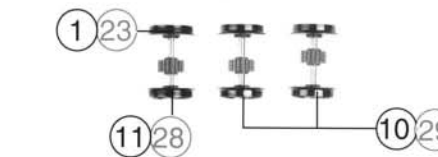
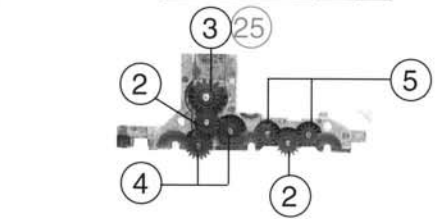
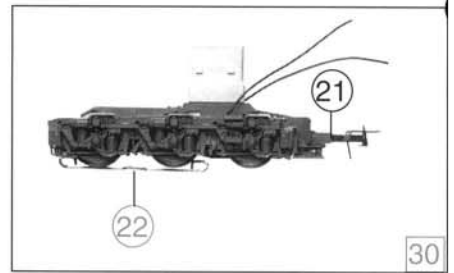
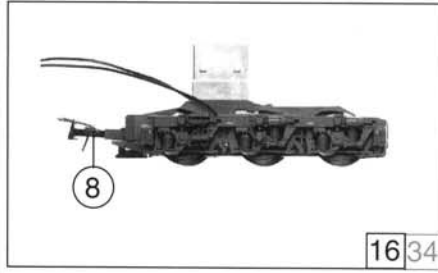


Pos. Nr.	Text	Art.-Nr.	Preis-gruppe
1	Hafttring f. DC <i>Traction tyre</i>	85612	17
2	Zahnrad z = 17/0,4 G <i>Gear = 17/0,4G</i>	86418	2
3	Schnecken Zahnrad f. DC <i>Gear</i>	86419	4
4	Zahnrad <i>Gear</i>	86460	2
5	Zwischenzahnrad <i>Gear</i>	86480	2
6	Schnecke f. DC <i>Worm f. DC</i>	86704	5
7	Kardanschale <i>Cardan Bearing</i>	87152	2
8	Standardkupplung <i>Standard coupling</i>	89246	5
9	Radkontakt <i>Wheel current contact</i>	89956	4
10	Radsatz o. Hafttring <i>Wheel without traction</i>	90893	18
11	Radsatz m. 2 Hafttringen <i>Wheelset with traction</i>	90894	20
12	Teilsatz 1 <i>Part set 1</i>	101234	28
13	Leiter <i>Step</i>	101237	3
14	Kontakthalter <i>Contact holder</i>	101239	5
15	Teilsatz 2 <i>Part set 2</i>	101240	11
16	Drehgestell komplett <i>Bogie assembly</i>	101241	53
17	Schneckensatz <i>Worm set</i>	101242	24
18	Getriebebesatz <i>Gear part set</i>	101244	18
19	Deckel <i>Cover</i>	101245	5
20	Zurüstbeutel <i>Bag with accessories</i>	101246	26
21	Kupplungskammer <i>Coupling holder</i>	101452	2
22	Schleifer <i>Collector shoe</i>	40003	-
23	Hafttring f. AC <i>Traction tyre</i>	85618	17
24	Schraube 1,6 x 5 <i>Screw 1,6 x 5</i>	85692	2
25	Schnecken Zahnrad f. AC <i>Gear f. AC</i>	86413	4
26	Schnecke f. AC <i>Worm f. AC</i>	86702	5
27	Radsatz o. Zahnrad <i>Wheelset without gear</i>	90895	16
28	Radsatz m. 2 Haltringen <i>Wheelset with traction</i>	90896	20
29	Radsatz o. Hafttring m. Zahnrad <i>Wheelset without traction with gear</i>	90917	18
30	Drehgestell 1 <i>Bogie assembly 1</i>	101252	56
31	Schneckensatz <i>Worm set</i>	101253	24
32	Deckel AC <i>Cover AC</i>	101254	8
33	Getriebe <i>Gears</i>	101255	12
34	Drehgestell 2 <i>Bogie assembly 2</i>	101256	49



27 o. Abb. / no. ill
Radsatz o. Zahnrad
Wheelset without gear